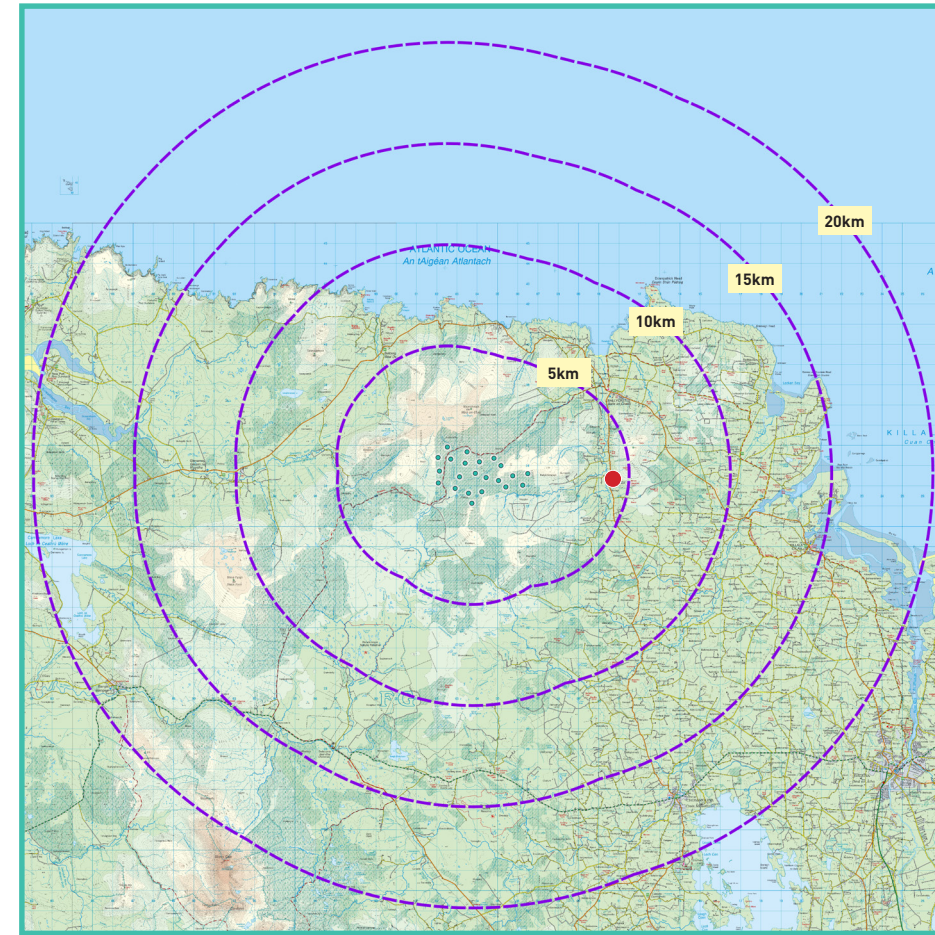


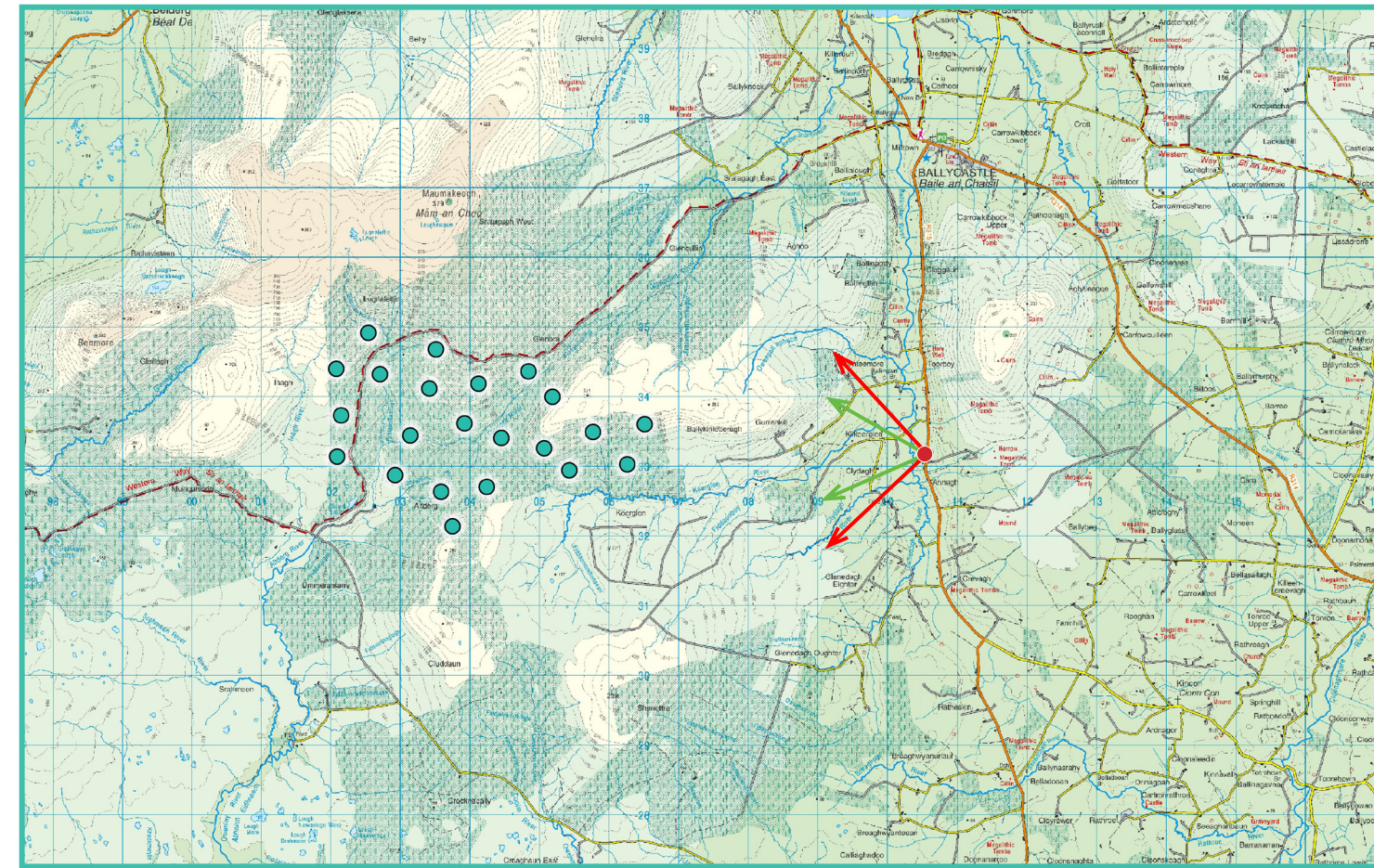
Photomontage 9

View from the R315 regional road in the townland of Annagh More, approximately 4.1km east of the nearest proposed turbine. This viewpoint is located along a Co. Mayo Scenic Route with Designated Views.

View point grid reference	510572(E); 833061(N)
Date of image taken	20.07.2021
Time of image taken	12:12
View point elevation	48m
Angle of Views	90° / 53.5°
View Direction (Image Centre)	272°
Horizontal extent of proposed turbines	21°
Distance to nearest proposed turbine	4.1km (T22)
Number of proposed turbines visible	10/22
Turbine Hub Height	99m
Turbine Tip Height	180m
Turbine Rotor Diameter	162m
Montage Type	Type 4* Photomontage / Photowire / Survey / Scale Verifiable
Camera & Lens	Canon 5D Mark III / Full Frame Sensor with a 50mm Lens
Tripod	Manfrotto 190X extended to approx 1.5m.
Guidance	* Visual Representation of Development Proposals, Landscape Institute Technical Guidance Note 06/19, 2019
Map Licence	© Ordnance Survey Ireland. All rights reserved. Licence number CYAL50267517



View point relative to 20km radius.



View point relative to wind farm site.



Detail of view point location.

Map Legend

Area shown in 90° view



Area shown in 53.5° view



View Point



Wireline Legend

Proposed Wind Farm

Proposed Met Mast

Existing Wind Farms

Permitted Wind Farms

Other Proposed Wind Farms

Prepared by

MKO
Planning & Environmental Consultants
Tuam Road, Galway.

Tel: (091) 73 56 11
E-mail: info@mkofireland.ie
Website: www.mkofireland.ie



Key Image at 120°

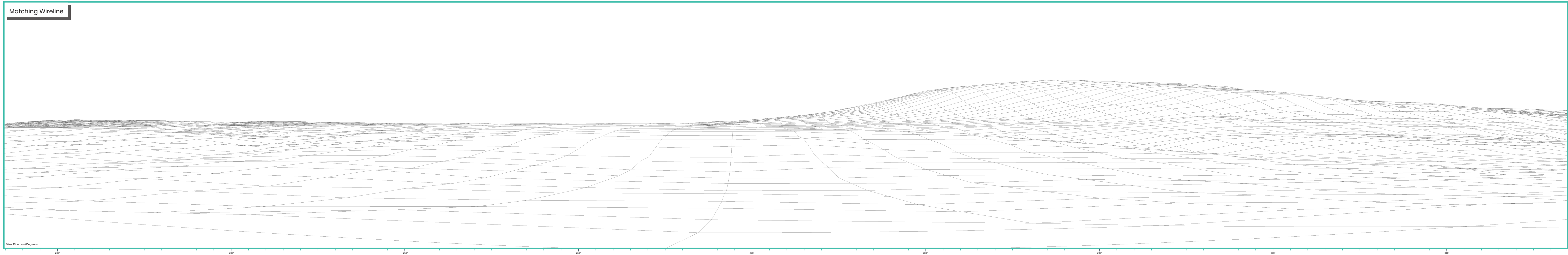


53.5° View Extent

Existing View at 90°



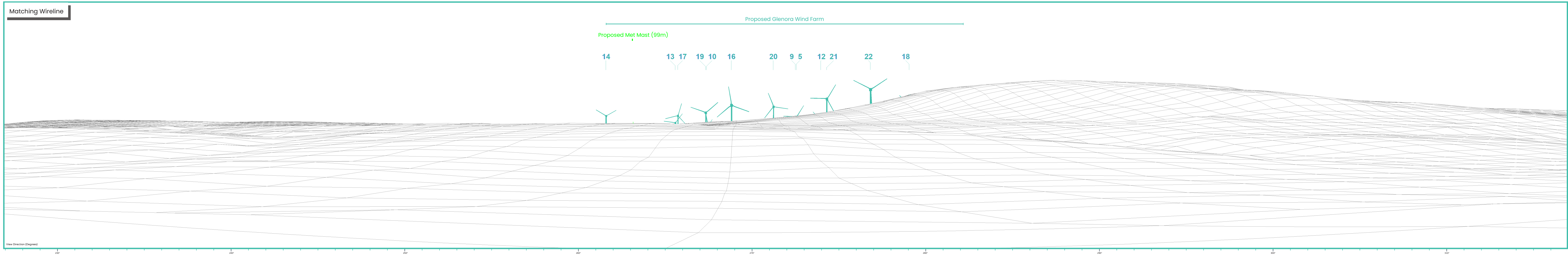
Matching Wireline



Proposed Photomontage with Cumulative at 90°



Matching Wireline





Proposed Glenora Wind Farm

Proposed Met Mast (99m)

14

13

17

19

10

16

20

9

5

12

21

22

18